

What is?

the SOURCE PROTECTION PROGRAM 2007-2008

As part of its commitment to safe drinking water and in conjunction with the Clean Water Act, the Ministry of the Environment has established the Drinking Water Stewardship Fund, a drinking water support program to help landowners take action to reduce threats to local municipal drinking water sources.

Funding will be provided in two phases by the Ministry of the Environment, through partnerships with participating Source Protection Regions and Areas.

- The first phase is the Source Protection Program – a transitional program in which \$7 million is available in 2007-2008.
- The second phase is the Ontario Drinking Water Stewardship Program, where \$21 million will be made available over three years from spring 2008 to spring 2011.



Who is Eligible?

for Funding under the SOURCE PROTECTION PROGRAM 2007-2008

Under the Source Protection Program, funding will be available to support landowners who take early actions that protect municipal drinking water sources in two key geographical areas:

- The 100-metre radius zone of a designated wellhead protection area (WHPA)
- The 200-metre radius surface water intake protection zone (IPZ) of a municipal drinking water source.



How?

Do I Access SOURCE PROTECTION PROGRAM FUNDING 2007-2008

If you are a landowner whose property is within or extends into either a 100-metre radius zone of a designated wellhead protection area (WHPA) or a 200-metre radius surface water intake protection zone (IPZ) of a municipal drinking water source, you may be eligible for funding. To apply for funding:

- 1 Contact your local conservation authority (or OSCIA for farms registered under the COFSP) to discuss eligibility for your project(s), funding guidelines, and to request a site visit and an application form.
- 2 Collect necessary information for your project(s) (permits, approvals, project design details, etc.) from a qualified industry professional.
- 3 Submit completed application form with supporting information to your local conservation authority.
- 4 Obtain approval from your local conservation authority and commence project.
- 5 Funds will be forwarded to you following a site visit from your local conservation authority and after you have submitted copies of all invoices for work completed.



For More Information:

This brochure provides general program information only. For more detailed information about programs available in your area, deadlines and application requirements, please contact your local Conservation Authority.



120 Bayview Parkway, Box 11,
Newmarket, ON L3Y 4W3
Tel.: 905.895.0716
Fax: 905.895.0751
info@conservation-ontario.on.ca



This project has received funding support from the Ontario Ministry of the Environment. Such support does not indicate endorsement by the Ministry of the contents of the material.

www.conservation-ontario.on.ca

For more information on the Source Protection Program, please visit the Ministry of the Environment's website:
www.ene.gov.on.ca/en/water/cleanwater/sourceprotection.php

November 2007

SOURCE PROTECTION PROGRAM 2007 - 2008



Actions to Protect Municipal Drinking Water through Watershed Stewardship Activities



PROGRAM 2007-2008	WHY APPLY FOR THIS FUND?	ELIGIBLE PROJECTS		ELIGIBLE COSTS	GRANT RATES & CAPS
Well Decommissioning & Upgrading*	<p>Unsealed abandoned wells and improperly sealed or maintained house, business, institutional, and farm wells provide a direct link between surface pollutants and groundwater.</p> <p>Abandoned wells are a significant pathway for contamination of aquifers. Identifying and plugging or sealing these wells will reduce the risk of contamination to local aquifers and watersheds.</p> <p>Damaged or poorly maintained drinking water wells pose an equally significant threat to personal and public health and must be maintained to prevent groundwater contamination.</p>	<p>To be eligible to receive funding for the following projects, the applicant's property must be within or extend into a 100-metre radius of a municipal wellhead and/or a 200-metre radius of a municipal surface water intake.</p> <ul style="list-style-type: none"> Sealing and capping old water wells (e.g., dug, bored, drilled or sandpoint) by a licensed well technician/well contractor licensed under the <i>Ontario Water Resources Act</i>. Upgrade maintenance for water wells currently in use to protect existing water wells from surface contamination by a licensed well technician/well contractor licensed under the <i>Ontario Water Resources Act</i>. 		<ul style="list-style-type: none"> Required permits and approvals for the project(s) Purchased material and supplies Contract labour (e.g., electrical and plumbing) Professional fees/technical support Fees for related design, inspection and construction 	<p>50% \$6,000</p>
Septic System Inspection & Upgrades*	<p>To protect municipal groundwater and surface water sources through repairing, upgrading or replacing part or all of faulty or malfunctioning septic systems.</p> <p>Not maintaining septic systems can result in contamination of drinking water sources and can cause serious environmental and health problems.</p>	<p>To be eligible to receive funding for the following projects, the applicant's property must be within or extend into a 100-metre radius of a municipal wellhead and/or a 200-metre radius of a municipal surface water intake.</p> <ul style="list-style-type: none"> Replace septic tank and leaching bed Replace septic tank and/or holding tank only Replace leaching bed only Pump septic tank Add plumbing connections/pump to transfer wastewater to septic tank Connect to a municipal sewer line (If this option is available, funding will not be available for upgrades or replacement) 		<ul style="list-style-type: none"> Required permits and approvals, such as building permit for approved project(s) Material and supplies Contract labour (e.g., electric and plumbing connections) Professional fees/technical support Fees for related design, inspection, and construction Connection fees and related work to connect to a municipal sewer line 	<p>50% \$10,000 for eligible projects \$20,000 for advanced systems</p>
Runoff & Erosion Protection*	<p>The main purpose of runoff and erosion protection funding is to protect municipal drinking water sources from runoff contamination and soil erosion through properly constructing/restoring buffer strips and riparian zones.</p> <p>Well vegetated stream banks and buffer strips can reduce the amount of sediment and nutrients that reach the water source.</p>	<p>To be eligible to receive funding for the following projects, the applicant's property must be within or extend into a 100-metre radius of a municipal wellhead and/or a 200-metre radius of a municipal surface water intake.</p> <ul style="list-style-type: none"> Manure Land Application Riparian Area Management Erosion Control Structures (Riparian) Erosion Control Structures Land Management for Soils at Risk Cover Crops Nutrient Management Planning Soil Erosion and Salinity Control Planning Riparian Health Assessment <p><i>Please Note: For more specific eligible projects within each category listed above, please contact your local conservation authority.</i></p>		<ul style="list-style-type: none"> Required permits and approvals Material and supplies Contract labour Professional fees/technical support Fees for related design, inspection, and construction/site assessment 	<p>Manure Land Application: 70% / \$10,000 Riparian Area Management: 50% / \$20,000 Erosion Control Structures (Riparian): 50% / \$20,000 Erosion Control Structures: 50% / \$20,000 Land Management for Soils at Risk: 50% / \$5,000 Cover Crops: 70% / \$5,000 Nutrient Management Planning: 25% / \$2,000 Soil Erosion and Salinity Control Planning: 25% / \$1,000 Riparian Health Assessment: 25% / \$1,000</p>
Pollution Prevention Reviews	<p>At the time of print, this program and the associated funding had not been fully established by the Ministry of the Environment. Please contact your local conservation authority for more information about this early action program.</p>				

What

Activities are Funded under the **Source Protection Program** 2007-2008

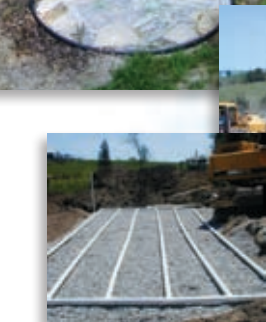
WELL DECOMMISSIONING AND UPGRADING

Decommissioning abandoned wells, including the testing, monitoring and technical work on water wells, and upgrading drinking water wells, may prevent these wells and poorly maintained wellheads from becoming pollutant pathways to municipal drinking water sources. Funding will be made available to all landowners (residential, business, institutional and farm) whose properties are located within or extend into the 100 metre radius of a municipal wellhead or a 200 metre radius of a municipal surface water intake.



SEPTIC SYSTEM INSPECTIONS AND UPGRADES

The septic module will provide funding for the repair, upgrade, or replacement of faulty or malfunctioning septic systems that are located within or extend into the 100 metre radius of a municipal wellhead or a 200 metre radius of a municipal surface water intake.



RUNOFF AND EROSION PROTECTION

The purpose of the runoff and erosion protection module is to protect municipal drinking water sources from runoff contamination and soil erosion through properly constructing and restoring buffer strips and riparian zones. Funding will be available to landowners that are located within or extend into the 100 metre radius of a municipal wellhead or a 200 metre radius of a municipal surface water intake.



POLLUTION PREVENTION REVIEWS AIMED AT BETTER MANAGEMENT OF MATERIALS STORAGE, HANDLING, AND DISPOSAL

Pollution prevention reviews will be made available to small and medium-sized businesses that are located within or extend into the 100 metre radius of a municipal wellhead or a 200 metre radius of a municipal surface water intake. These reviews will be available to businesses that manufacture, handle, store, and dispose of materials into water, land, or air, and will identify threats to sources of municipal drinking water.



* Please contact your local conservation authority for more information, a list of terms and conditions and to determine if there are other cost-sharing opportunities available in your area. All projects must comply with relevant legislation. In the future, local source protection plans may reveal additional issues to be addressed on some properties, but the Source Protection Program provides a good incentive to get started on some projects now.